



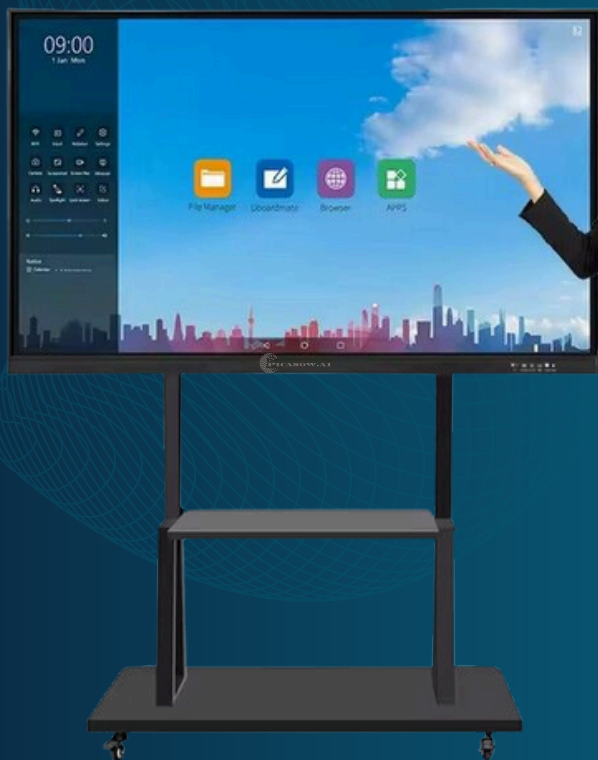
PICASOW.AI

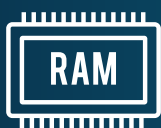


PICASOW.AI

# INTERACTIVE FLAT PANEL

Upgrade the Future—Empowering Smart  
Learning and Smarter Presentations





**8GB/128GB**



android **14**

**CPU: OCTA -CORE A55 1.2GHZ**

## SMART DIGITAL BOARD



Android 14  
Octacore Cortex-A55



Bluetooth 5.0



RAM & ROM  
8 GB & 128 GB



Display  
4mm Fully Tempered  
High Explosion-Proof  
Anti-Clare Glass



★ **5.0**

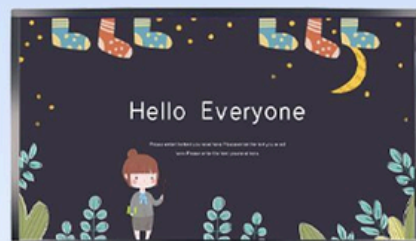
## 4K HD DISPLAY PANEL

3840 × 2160 RESOLUTION

16:9 / 8 BIT / 16.7 MILLION

4000:1 (TYP.) TRANSMISSION

178° PERSPECTIVE



**OCR FEATURE**



## Flexible Connectivity



USB



HDMI



VGA



LAN



SD



Touch



MIC-IN



Earphone



AV

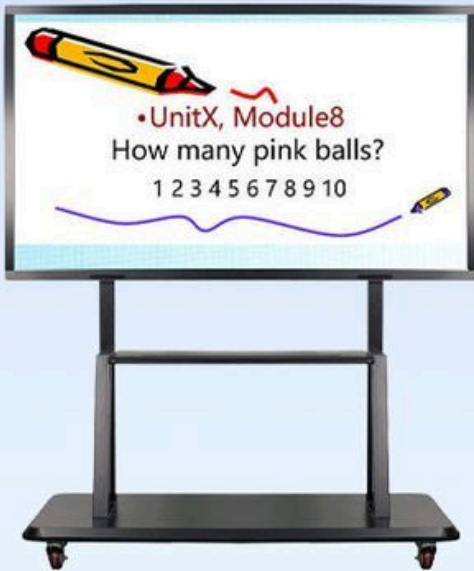
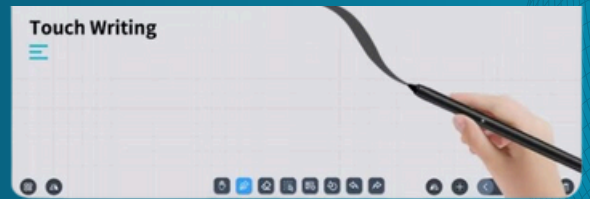




ANTI-GLARE  
TEMPERED GLASS



WIRELESS  
VOTING SCREEN



## SMART WRITING

20 points multi-touch

Smart gestures

4mm tempered glass without  
fear of scratches



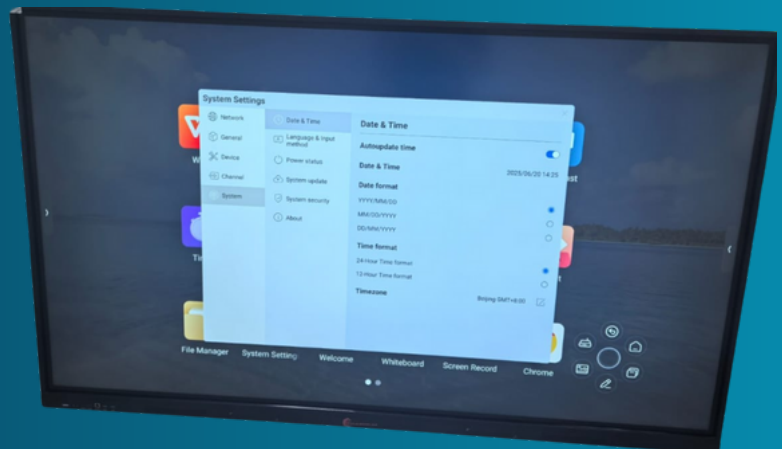
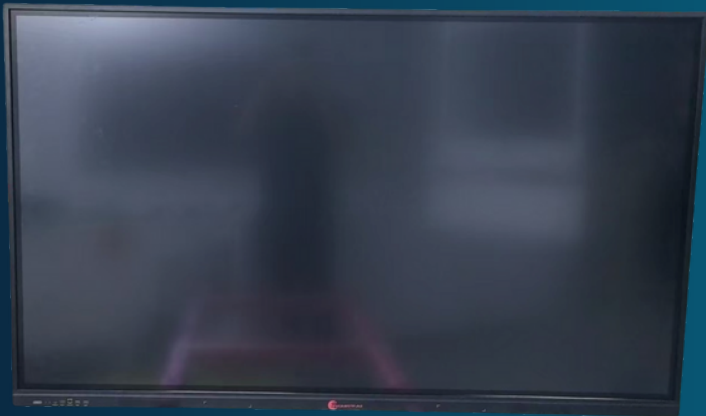
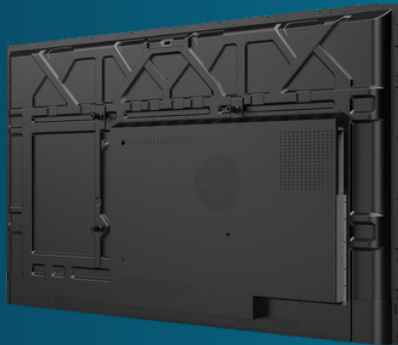
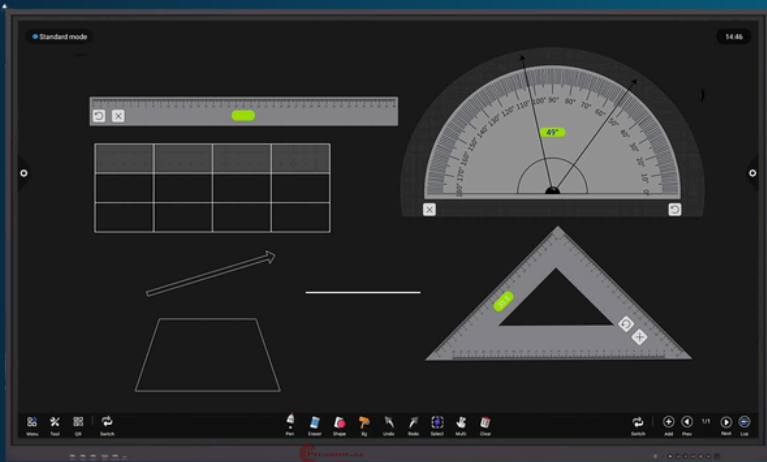
WIRELESS SCREEN SHARING



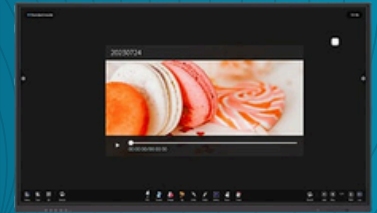
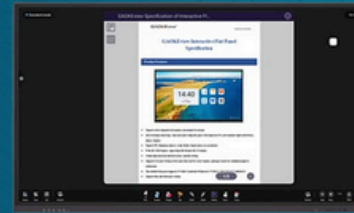
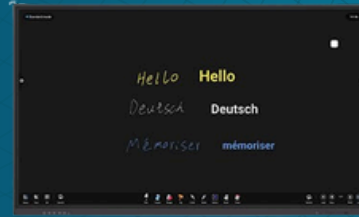
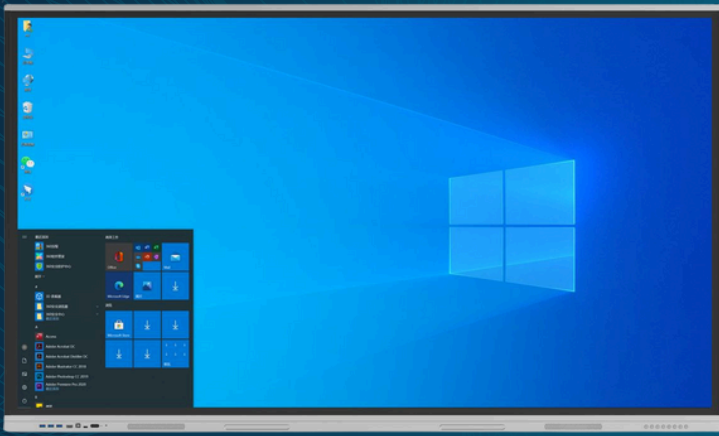
## WHERE IDEAS COME ALIVE — DIGITALLY

PICASOW.AI









**STANDARD PACKAGE**

**1ST LAYER**  
Foam protection

**2ND LAYER**  
High quality five layer corrugated

**3RD LAYER**  
Wooden box frame protection  
Remarks: it can be easily disassembled by customs

# Products Specifications Interactive Write board



## Display Parameters

Display size	65 to 110 inch
Display type	LED LCD display
Screen display size	1649.0 x 927.1mm 【 HxV 】
physical resolution	3840(H)×2160(V)
Display color	10bit, 1.07B
refresh rate	4K-60HZ
brightness	≤350cd/m2
Contrast	5000:1
Viewing angle (degrees)	178°
Display protection	4mm fully tempered high explosion-proof-anti-glare glass
Backlight life	50,000 hours



# Touch Parameters

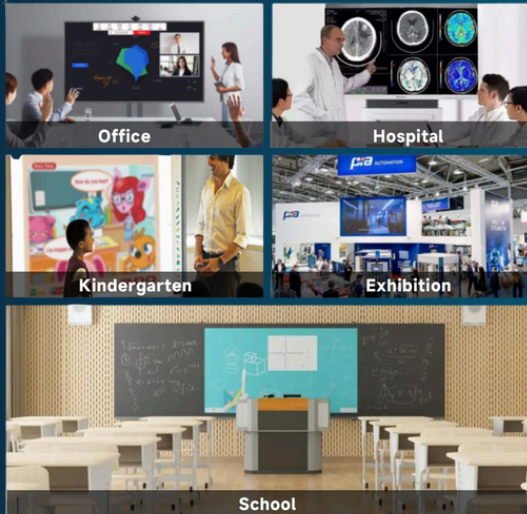
Touch embeds	Built-in one- piece, not plug-in, front detachable design
touch sensing technology	Infrared sensing touch recognition technology (20 points)
writing style	Finger, touch pen or other non-transparent object with a diameter of not less than 5mm (multiple points 8mm)
cursor speed	120 points/s
positioning accuracy	More than 90% of the touch area is $\pm 2\text{mm}$
Communication Interface	Type B USB male connector
touch resolution	32767*32767
Touches	Theory unlimited times
computer response	System automatic identification; $\leq 15\text{ms}$
driver	No need to drive
touch function	Support 20-point computer touch operation Supports image enlargement, reduction, and rotation
Communication Interface	Type B USB male connector
touch resolution	32767*32767
Touches	Theory unlimited times
computer response	System automatic identification; $\leq 15\text{ms}$
driver	No need to drive
touch function	Support 20-point computer touch operation Supports image enlargement, reduction, and rotation

# Interactive Function Parameters

Speaker specifications	10W/8 ohm × 2 speakers	
G6760V1.U board, 8+128GB, Android 14.0 system, GPU: MaliG52 MC2_600MHz, CPU: Octa -core A55 1.2GHz, 2.4G+5Gwifi+B T 5.0	RS232 port: 1 group	PC TOUCH 2.0 port: 1 group
	HDMI input port: 1 set	RJ45 input port: 1 group
	USB 2.0 port: 2 sets	Coaxial port: 1 group
	Line Out port: 1 group	TF Card port: 1 set
Front terminal input	Front interface: USB*2 (full channel), type-c*1, HDMI IN*1, TOUCH*1  Front one button: switch on and off	
Other functions	Supports full-channel switching touch, touch menu, touch menu operation, touch volume adjustment, touch brightness adjustment Support touch one-key energy saving Supports listening alone [i.e. the screen is off but the all-in-one machine is in working condition, and the audio and video can be played normally] Support mobile phone wireless screen casting Support one-click screen recording function Support touch menu to shut down with one click Supports front computer USB3.0 port Supports transferring external devices to use the machine's built-in touch box function Support network follow function Supports inserting signal sources, videos, browsers, file management, pictures, and PPT into the whiteboard. pictures, and PPT into the whiteboard.	



# Characteristics of the whole machine



Shell and appearance	Aluminum profile frame design, front buttons, front ports, front speakers
color	black
Overall dimensions of the machine	1704.4*1020.7*91.8mm
Package Size	1822*245*1149mm
net weight	56KG
gross weight	70KG
Maximum power consumption rate	≤195W
Standby power	≤0.5W
Installation method	Standard wall-mounted bracket

# Working Environment

workplace	indoor
Operating temperature	0°C - 40°C
Working humidity	10% - 90% non-condensation
Storage temperature	-20°C - 60°C
Storage humidity	10% - 90% non-condensation

**Standard random accessories (accessories are provided according to the actual situation)**

remote control	1
Battery	2
Maintenance card	1 piece
touch pen	2 sticks
Certificate	1 piece
manual	1 copy
1.5m power cord	1
Wall Mount Bracket (VESA)	1



8881292957



[www.picasow.com](http://www.picasow.com)



[admin@picasow.com](mailto:admin@picasow.com)